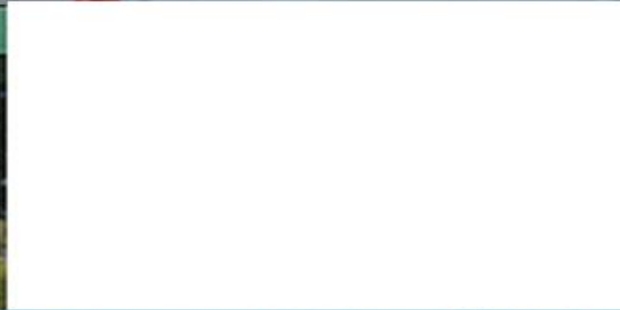




Online & Mobile



Track Entry / Exit Times



Transportation



Watchlock

> M-TRACK presents a revolution in security:
WatchLock - The reporting lock



Vehicle total Control & Management Service Provider



WatchLock®

> Be the First
to Know

Your business's most valuable assets are priceless and irreplaceable. In today's world, it is essential to know where and when your assets are being accessed, to be conscious of any faults and to reduce the risk of falling victim to a security breach.

Imagine a High Security padlock that could communicate. It would send you an alarm if someone opened it. At every moment, you can be aware of the precise location of your lock, and trace your belongings at any given time. How much easier would it be to manage your assets more efficiently and to protect your most valuable items. Through identifying the specific security needs of your business, we've developed WatchLock, the reporting lock — that both guards and reports.

WatchLock offers an ideal solution to asset owners across a variety of industries. Whether stationary or mobile, device or property, personal or business, on or offsite, WatchLock will track, trace and alert you to every move, entry and unauthorized event. You get all of this in one simple to install, user-friendly product.

WatchLock combines Mul-T-Lock's High Security padlock with advanced technological GPS location system and GSM communication from Starcom Systems, providing you with a real-time alert from anywhere at any time. WatchLock achieves the most intelligent integration of security systems for ultimate peace of mind.

M-Track 

Vehicle total Control & Management Service Provider

WatchLock™

Be the first to know



Applications

WatchLock can be used in a wide range of applications for the protection of devices and property, without the need for any special preparation, wiring or installation. Its cellular communication abilities, along with its embedded GPS technology make it ideal for remote locations or for use with transporting goods and valuable equipment. With it, you'll have a location indication of your secured items, according to your needs.

Cargo

This application can track high-value cargo throughout its transport cycle, while alerting you to predefined events that warrant your attention. WatchLock will monitor your vehicle, truck, van or container, as it moves from one location to another, regardless of distance or the transportation method.

Remote Locations

Remote Locations require the security of unmanned locations to prevent theft or damage. WatchLock lends itself uniquely to this application as it allows you to reach, monitor and provide security for your most remote assets. An ideal solution for those hard-to-reach locations such as water lines, high antennas and surveillance cameras, where the physical inspections of locks is both labor and time intensive.

Security Companies

The top requirement for security is control and continuous coverage. WatchLock is designed to

provide day and night safeguarding of your assets, while keeping you informed - no matter where you or the assets are, delivering an added level of security to your business.

Customs Operations

The security of customs operations can be complex and challenging due to risk of tampering, while en route and during the inspection cycle. Based on the knowledge that your lock will remain closed, WatchLock will assist in speeding-up the clearance of your goods and allow the examination process to run smoothly.

Commercial & Retail

The movement and storage of your materials and inventory should be key priority. Incorporate WatchLock into your supply-chain strategy to better manage the flow of your goods from border to border and to make certain that they have not been accessed. WatchLock can be regarded as your gatekeeper from point of origin and until delivery to the consumer.

Personal Use

WatchLock is versatile when it comes to protecting your personal valuables. Whether it's your cherished motorbike in the driveway or your priceless jewelry in storage, WatchLock will give you the comfort of knowing that your valuables are being monitored and will grant you total peace of mind.



Benefits

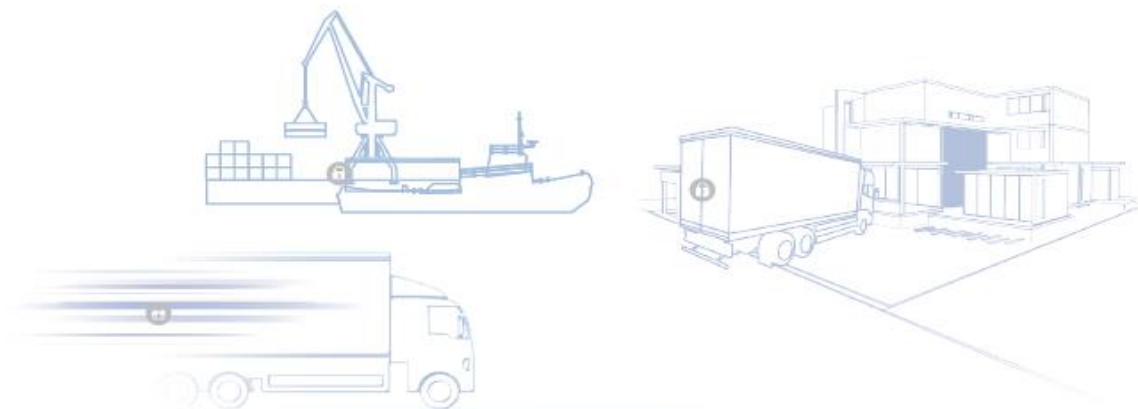
The WatchLock robust and multi-functional design offers an all-in-one solution for a wide array of customer and industry needs, presenting these benefits as follows:

- **Maximum Control** - WatchLock will supervise all openings and closings and informs you of all entries and exits to and from defined areas. This in turn, will boost operational efficiency, granting you maximum control of your business.
- **Real time Monitoring & Reporting** - with WatchLock you are consistently informed about the status of your property or valuables. Real time information is at your fingertips at all times, including any irregularities or breaches, so you can decide when your attention is warranted.
- **Easily Operated** - easy to use, reliable and simple

to install without the need for new infrastructure or wiring.

- **Secure** - a robust high security padlock for enhanced protection and durability. WatchLock is designed to protect your company from intruders and thus is capable of withstanding physical breakage.
- **Notifications** - WatchLock allows you to choose the communication device of your choice - whether cell phone, PC or tablet to enable you to react immediately upon receiving an alert.
- **A Smart Investment** - physical inspections of locks is both labor and time intensive. WatchLock is designed to be cost effective saving you precious time and manpower.

 Locks >  Alerts > 





A MUL-T-LOCK AND M-TRACK INNOVATION

Mechanical and Electronic industry leaders, Mul-T-lock and M-track have joined forces and expertise to produce and deliver the next generation high tech locking solution. WatchLock combines advanced and patented technologies with innovative equipment and unique software to give you maximum control, ensuring you get the peace of mind you deserve when securing your valuables.

The High Security is provided by Mul-T-Lock. For close to 40 years, Mul-T-Lock has been designing, manufacturing, marketing and distributing innovative High Security locking solutions to people, places and organizations globally. Adhering to the world's most stringent standards, Mul-T-Lock High Security solutions are at work on every continent, in nearly 70 countries, and securing over 100 million users. Using advanced and patented technologies, Mul-T-Lock stays a step ahead of the market by anticipating customers' security and operational needs.

As a member of the ASSA ABLOY group, and with availability through over 20,000 authorized and trained service centers, customers rely on Mul-T-Lock to provide proven, proactive and protective High Security locking platforms.

The embedded GPS and cellular communications capabilities are supplied by M-track .

M-track develops, manufactures and markets automated systems for remote monitoring and management of fleets of vehicles, containers and people. The systems provide a complete solution, consisting of innovative equipment and unique software. Thanks to the user-friendliness of the system, it provides useful and effective solutions for every need. With more than 15 years of experience and expertise, M-track distributes and sells its products through more than 110 technology partners and independent operators in more than 53 countries and its application operates in 32 languages.

An award-winning innovation, WatchLock® wins Physical Security Product of the Year Award at IFSEC 2012.



WatchLock



Vehicle total Control & Management Service Provider

For Further Information
www.m-track.net