



RAINBOW



Personal Tracking

M-Track 

Vehicle Total Control & Management Service Provider



A Chinese sage used to say to his dear ones: "If I could be in two places at the same time, I would be with you twice at the same moment."

If you could, you would probably be with your dear ones day and night, to ensure the safety and protection of your children and your elderly parents. However, you don't want to interfere in their privacy, and you realize how important the feeling of freedom, personal independence and letting go is to them! And to you too!

We at **RAINBOW** understand this emotional conflict. That is why we have specially developed, for you and for your dear ones, **RAINBOW** the only personal tracker that provides automatic supervision from a distance. When your dear ones carry it, they are not alone.

From today, **RAINBOW** allows you and your dear ones to conduct your daily lives in the most independent, unhindered and secure way, and this is the perfect way to real freedom!



RAINBOW



By using **RAINBOW** you gain:

🕒 Full Control

RAINBOW is a unique personal tracker, the only one which allows automatic long distance supervision. You can define a variety of events suitable for each age, health condition and characteristic of each carrier. These events can automatically activate the emergency button in a number of situations, such as leaving a pre-defined geographical area (geofence), falling, unusual walking pace, unreasonable running, not being in a certain place at a certain time (such as the kindergarten, senior center, clinic, etc.), lack of movement of the device and more. In addition you can be alerted if the device is left behind or is not being worn.

🕒 Conduct your daily lives with a clear mind

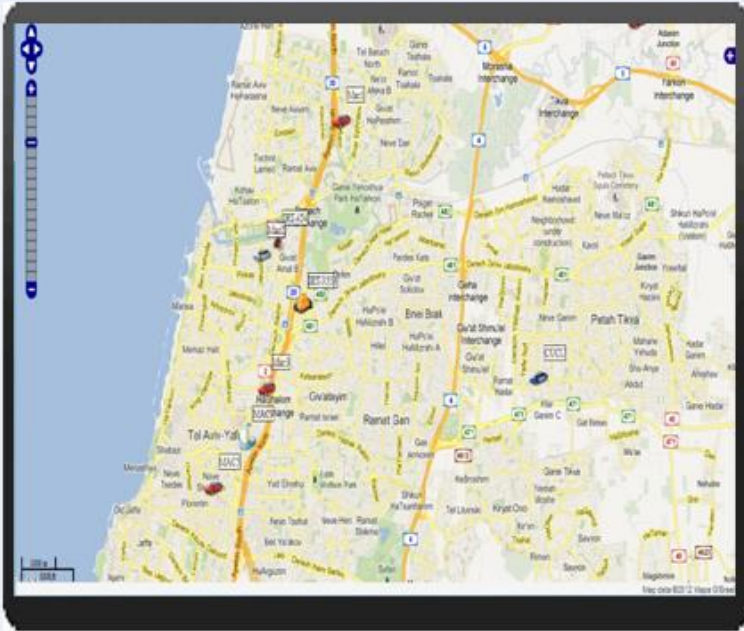
RAINBOW is the only personal tracker that provides automatic and active solutions in situations of extreme lack of control, in which the user cannot press the emergency button for some reason. When necessary, an alert will automatically be transmitted to the local emergency services. If required, you can activate the voice channel remotely without the intervention of the person who wears it. In addition, the system can monitor vital signs by connecting to external sensors worn by the person and report on the heartbeat rate and blood oxygen level.

🕒 Independence starts with freedom

RAINBOW allows you to be relaxed and unhindered. It releases you from nonstop dependence and worry about your dear ones. All this without interfering their privacy and self-respect.



RAINBOW



🕒 Your dear ones are in touch with you at the press of a button

RAINBOW allows your children or your elderly parents to talk to you at any moment by simply pressing a button. This ensures them of constant and immediate communication.

🕒 Convenient & user-friendly interface

RAINBOW includes a convenient interface allowing you, within a few simple steps, to define various alerts and to whom to send them.

The alerts can be received on your mobile phone or an e-mail. Phone numbers can be added and shown as icons on the screen of the device for easy access.

🕒 The expertise & experience of **M-Track** is yours

RAINBOW is a unique product of the global "M-Track".

This company specializes in practical and accessible personal wireless solutions, using advanced technology, integrated with telecommunication and computerized information.


The company operates in over 50 countries around the world, and in over 25 languages, so it can be used anywhere in the world.

M-Track provides you with a constant and reliable service, ensuring you that the safety of your dear ones is in the most professional of hands.



RAINBOW

The tracking unit is part of an overall system for support and monitoring that includes hardware accompanied by an online application with a unique and friendly interface to offer a comprehensive solution.

 Main Specifications		
Measurement	Small-sized Weight	90 x 50 x 15mm 100 gr.
Screen	Type Measurement Resolution	LCD 40x20x2mm 100x50 pixels
Supply	Voltage Power	3.75v 1mA (sleep mode) – 92mA (transmit)
Operating Humidity		Up To 80%
Cellular Modem	GSM Network Channels	Quad Band (850, 900, 1800, 1900). Built in antenna GPRS, SMS, VOICE
Messages	SMS GPRS	Encrypted Protocol TCP/IP over PPP
GPS	Receiver and Antenna Protocol Positioning Accuracy Navigation Update Rate Navigation Method Time to First Fix (TTFF)	Internal NMEA (Binary format) Position: 10m CEP(50%) Velocity: 0.2m/s (50%) 1 second (Default) All-In-View solution 2-Satellite solution Hot Start: 12 sec Warm Start: 35 sec Cold Start: 50 sec
CPU Capacity	Static RAM Nonvolatile Memory Flash Memory	512 Kb 58 Kb 2048 Kb
Battery	Type	PoLiFlex, 1200 mAh
USB	Mini USB	
Accelerometer	Type	3-Axis, 0.1g resolution



For Further Information
www.m-track.net



Vehicle total Control & Management Service Provider